



“SPORTSKA DVORANA, Labin”

■ STUDIO 92

Ester Miletić
Robert Dragogna
Igor Miletić
Natali Zulijani

POSTOJEĆE STANJE - PROBLEMATIKA TERENA



ŠIRINA IGRALIŠTA



MINIMALNI RAZMAK



DUŽINA IGRALIŠTA

POSTOJEĆE STANJE - PROBLEMATIKA PRISTUPA I KOMUNIKACIJA



PRISTUP



ULAZNI HALL



KOMUNIKACIJA ŠKOLA-DVORANA



SPOREDNI ULAZ

POSTOJEĆE STANJE - PROBLEMATIKA - STANJE GRAĐEVINE



DOTRAJALA STOLARIJA



ORONULA FASADA



PUKOTINE I LOM KONSTRUKCIJE



SANITARNI ČVOROVI



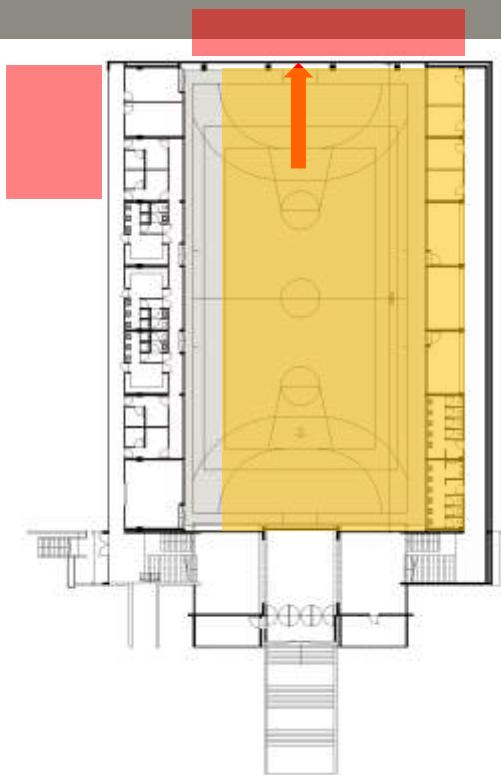
GRIJANJE, HLAĐENJE, VENTILACIJA



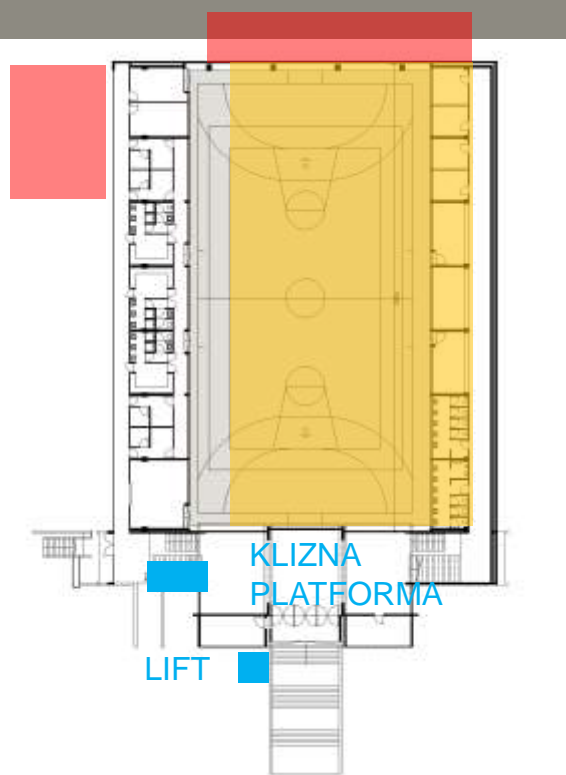
NEDOSTATAK SPREMIŠTA

FAZE REKONSTRUKCIJE SPORTSKE DVORANE

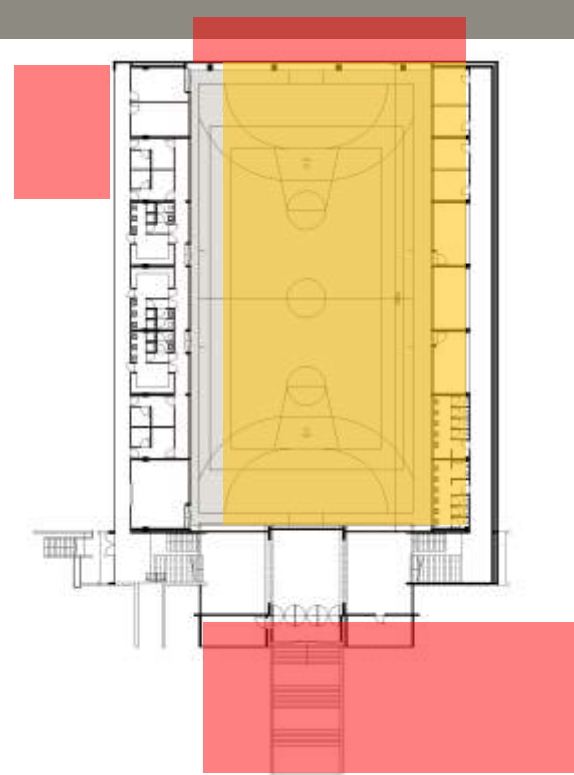
1. PROŠIRENJE DVORANE
PREMA ISTOKU ZA 1,6 m
2. POVEZIVANJE VELIKE I
MALE DVORANE SA TOPLOM
VEZOM
3. NOVA POZICIJA TERENA



4. PRILAGOĐAVANJE PRISTUPA
OSOBAMA SMANJENE
POKRETLJIVOSTI



5. PROŠIRIVANJE SADRŽAJA
SPORTSKE DVORANE U OBLIKU
DOGRADNJE ANEKSA PREMA
ZAPADU
P= 600,00 m² / etaža



IDEJNO RJEŠENJE SPORTSKE DVORANE _ SITUACIJA _ NOVO STANJE

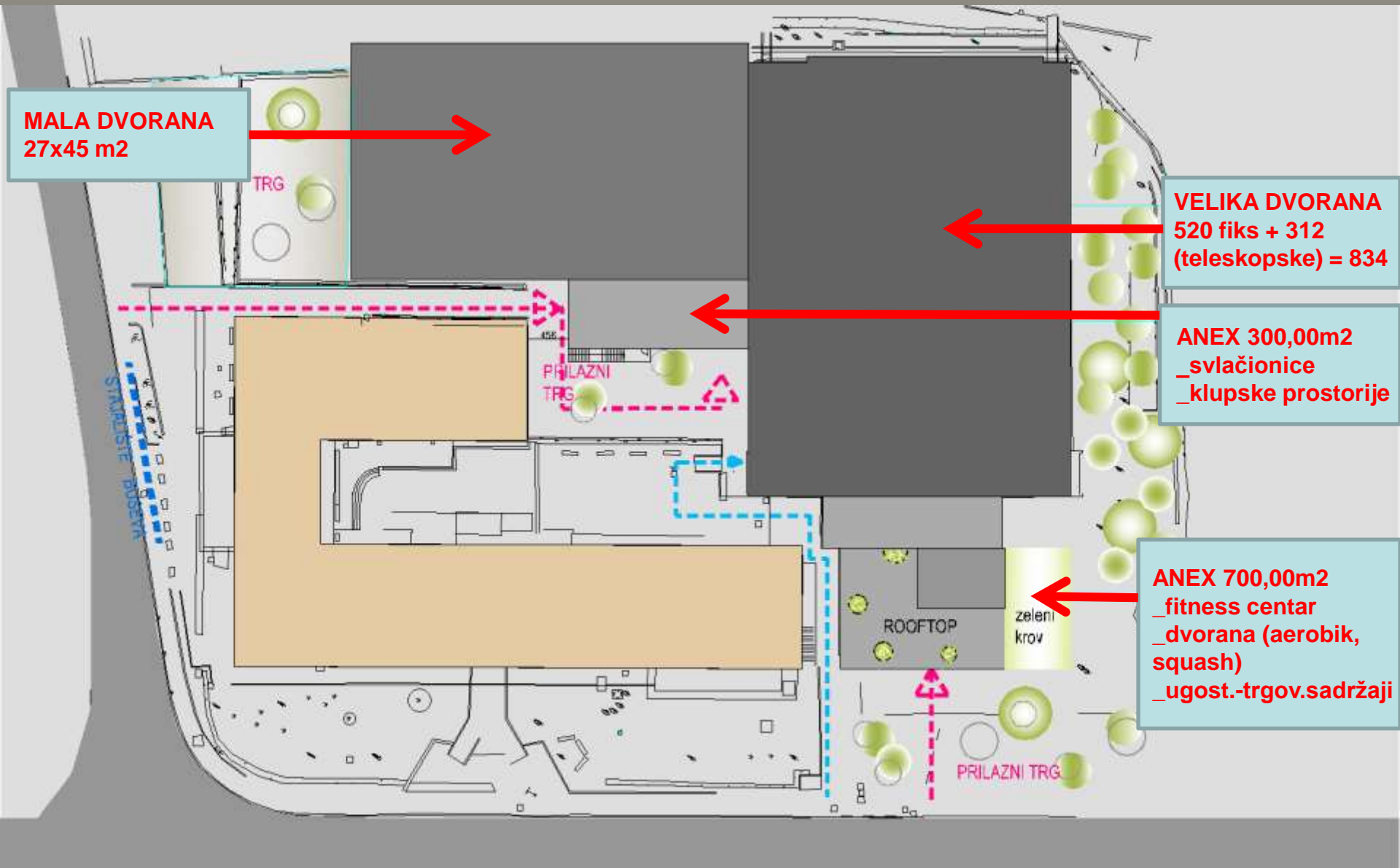
MALA DVORANA
27x45 m²

TRG

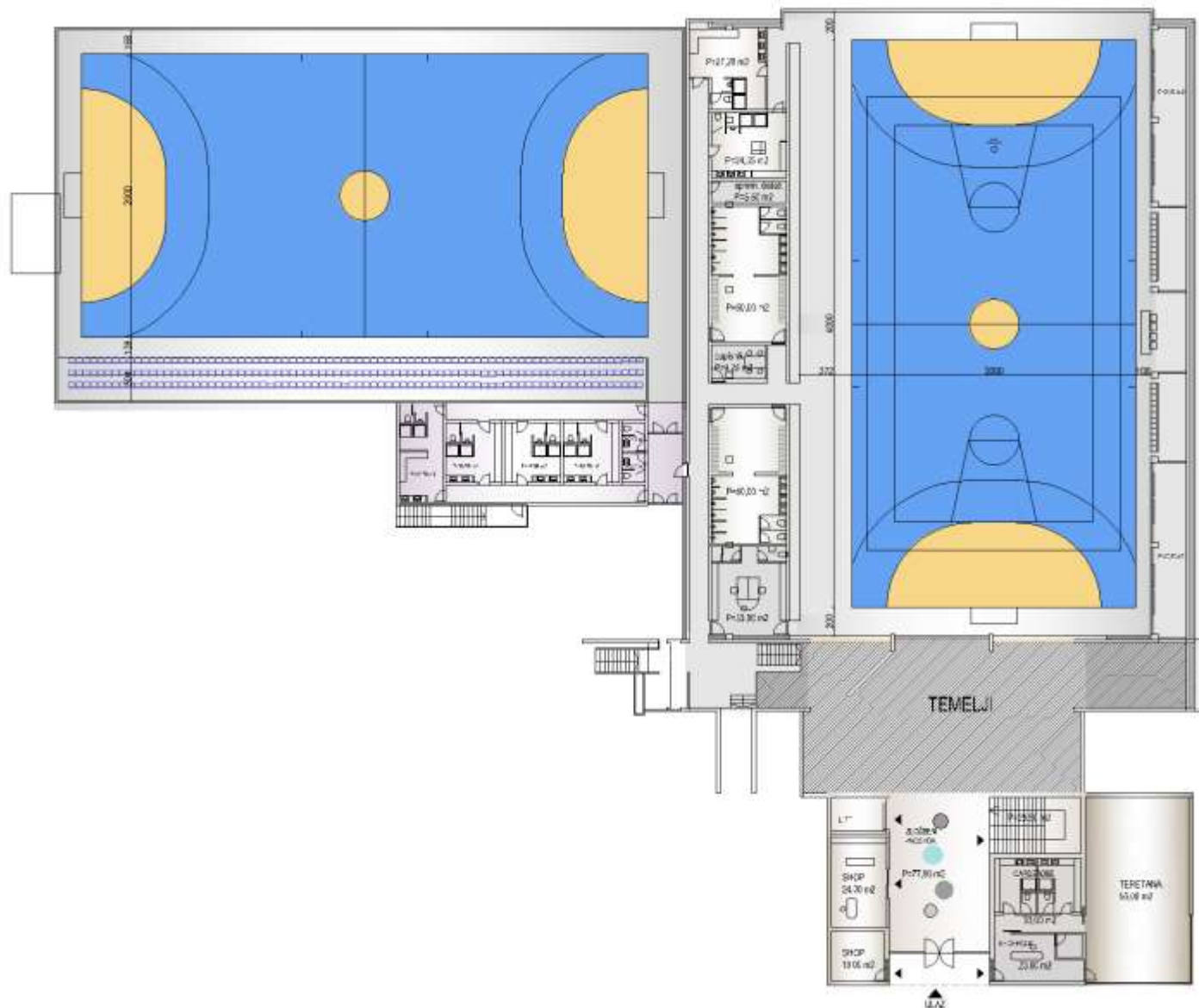
VELIKA DVORANA
520 fiks + 312
(teleskopske) = 834

ANEX 300,00m²
_svlačionice
_klupske prostorije

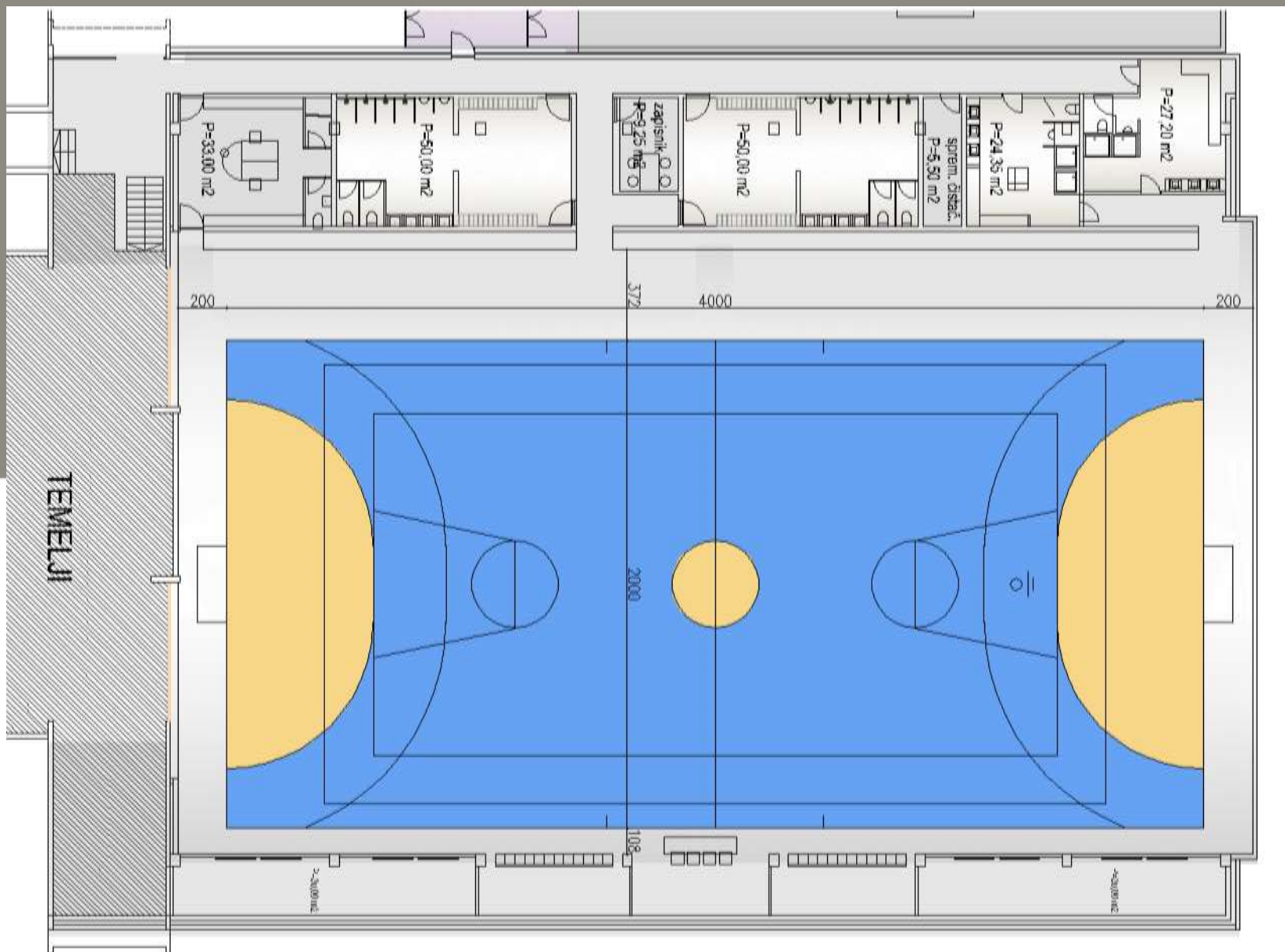
ANEX 700,00m²
_fitness centar
_dvorana (aerobik,
squash)
_ugost.-trgov.sadržaji



IDEJNO RJEŠENJE KOMPLEKSA SPORTSKIH DVORANA _ TLOCRT ETAŽE 0 _ NOVO STANJE

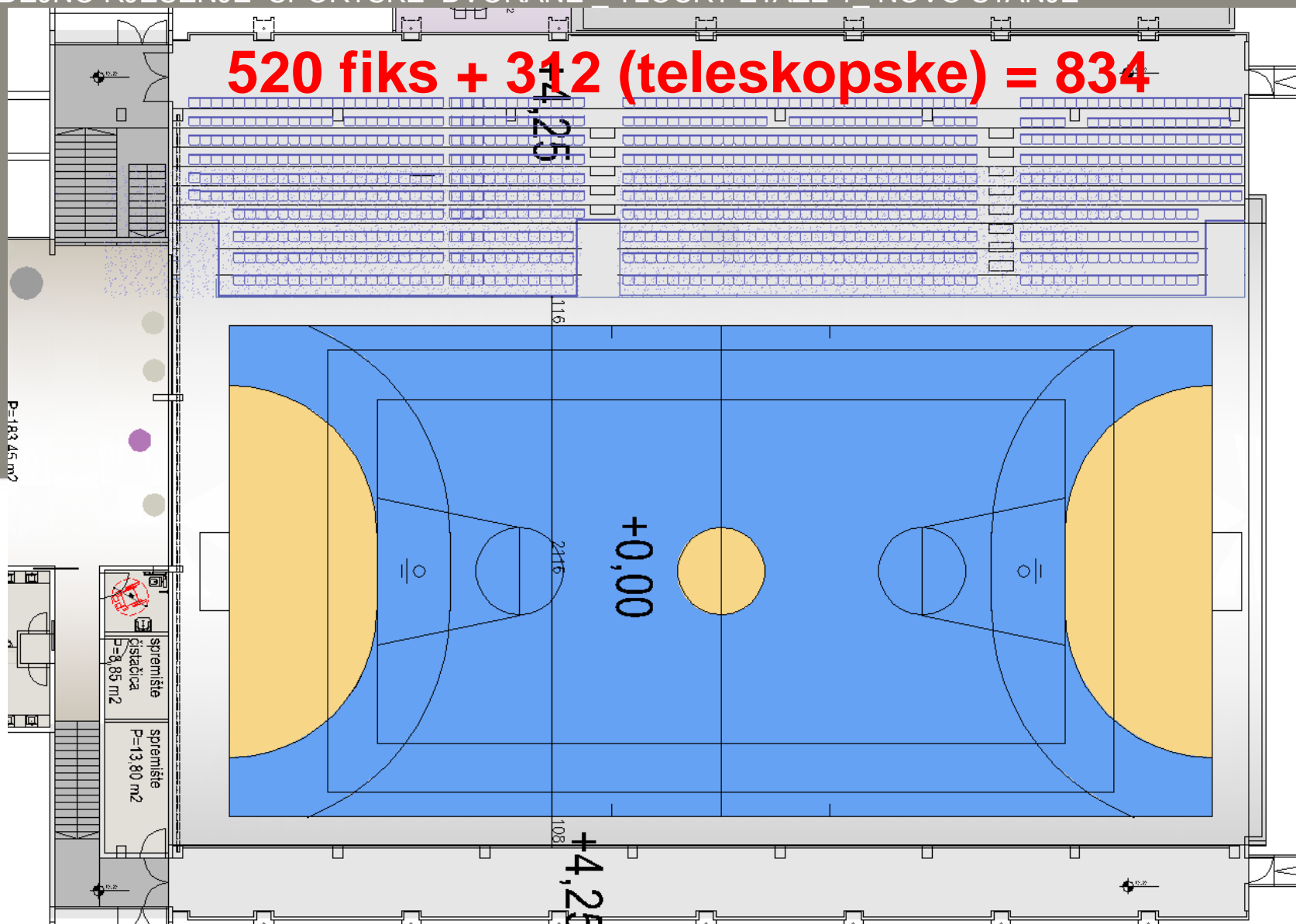


IDEJNO RJEŠENJE SPORTSKE DVORANE _ TLOCRT ETAŽE 0_ NOVO STANJE

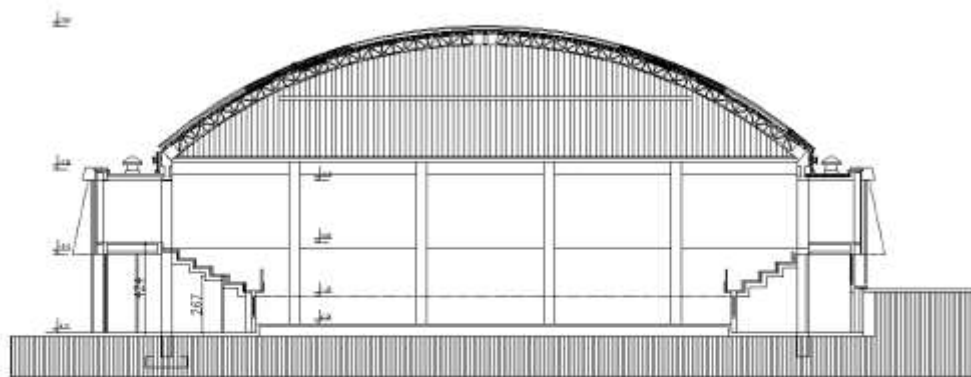


IDEJNO RJEŠENJE SPORTSKE DVORANE TLOCRT ETAŽE 1 NOVO STANJE

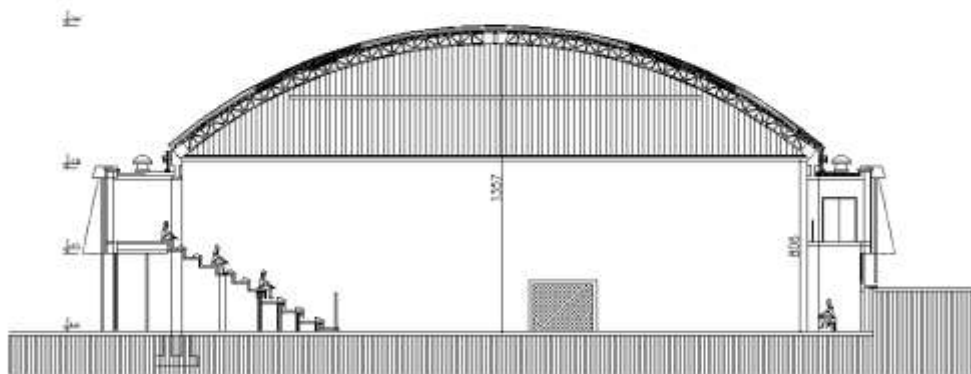
520 fiks + 312 (teleskopske) = 834



IDEJNO RJEŠENJE SPORTSKE DVORANE _ PRESJEK

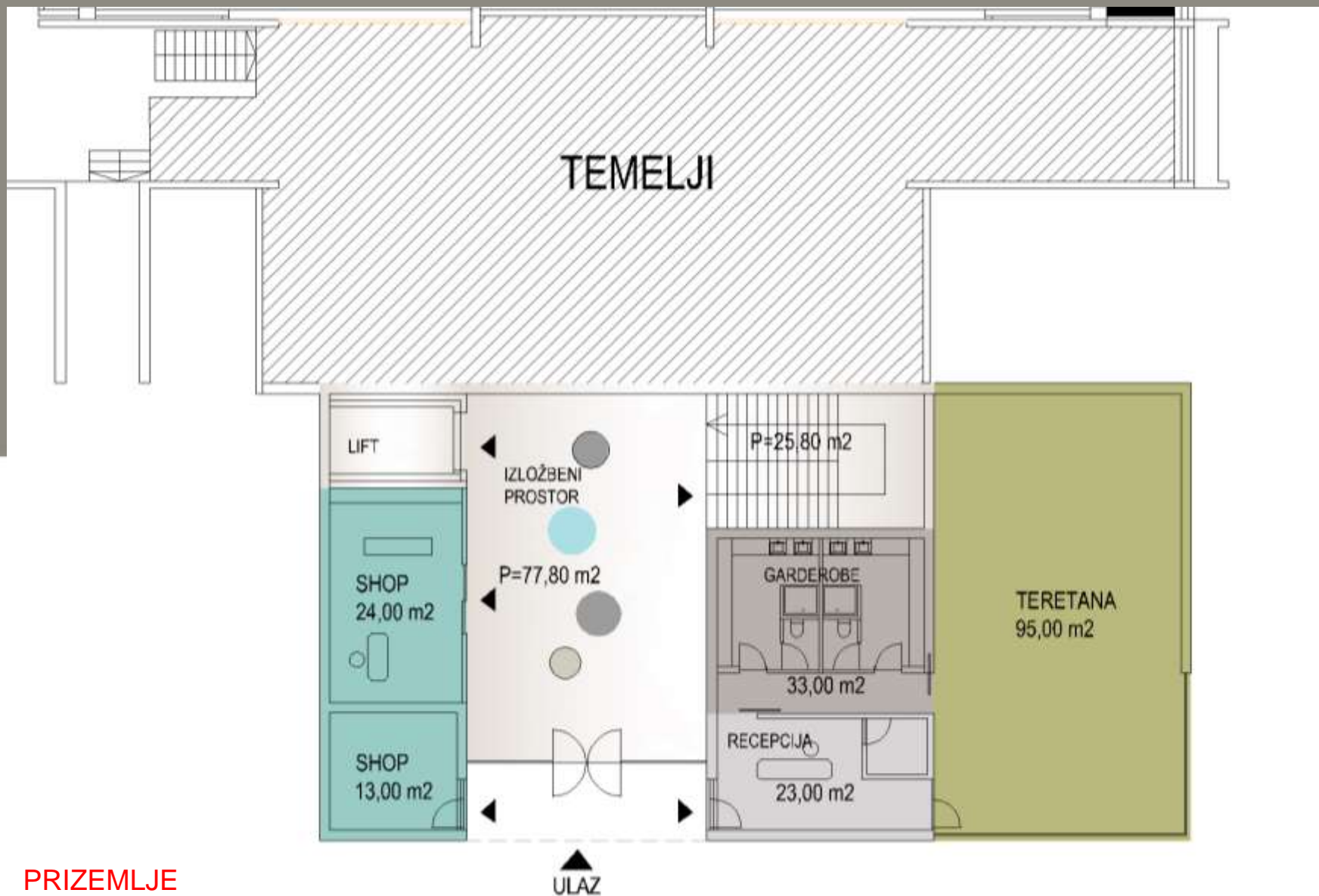


POSTOJEĆE STANJE



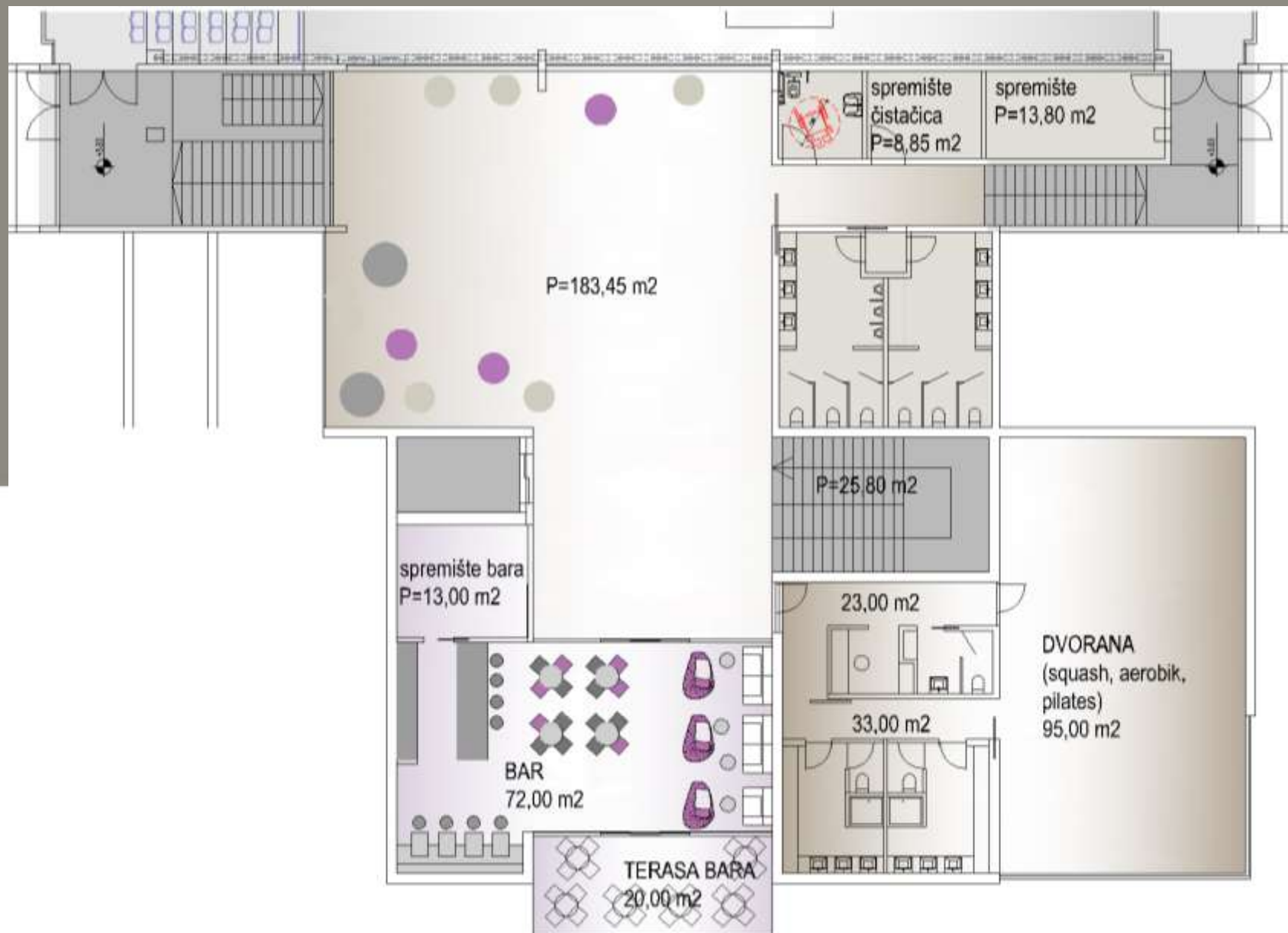
NOVO STANJE

IDEJNO RJEŠENJE SPORTSKE DVORANE _ DOGRADNJA / ANEX NA JUŽNOJ STRANI

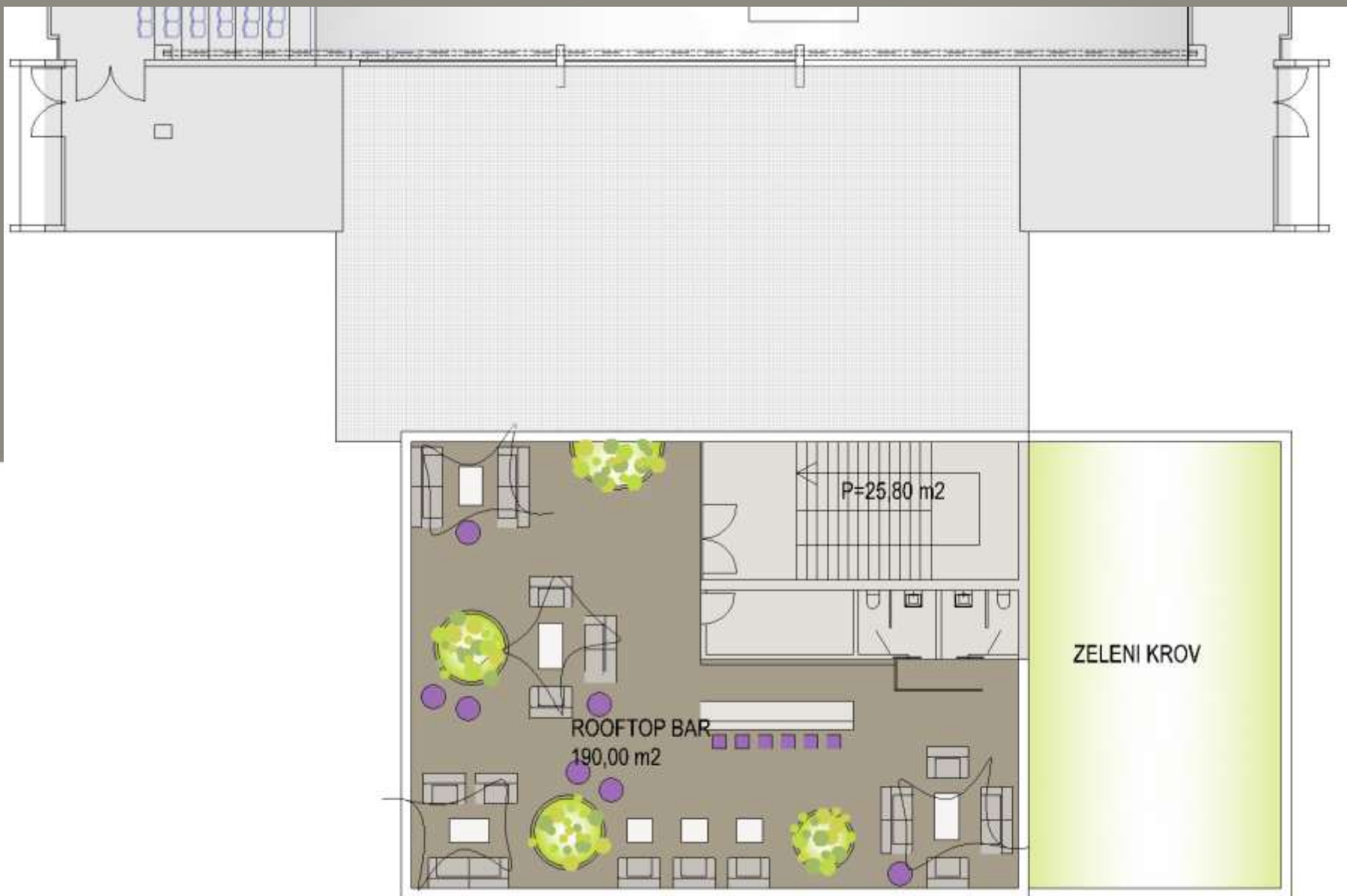


PRIZEMLJE

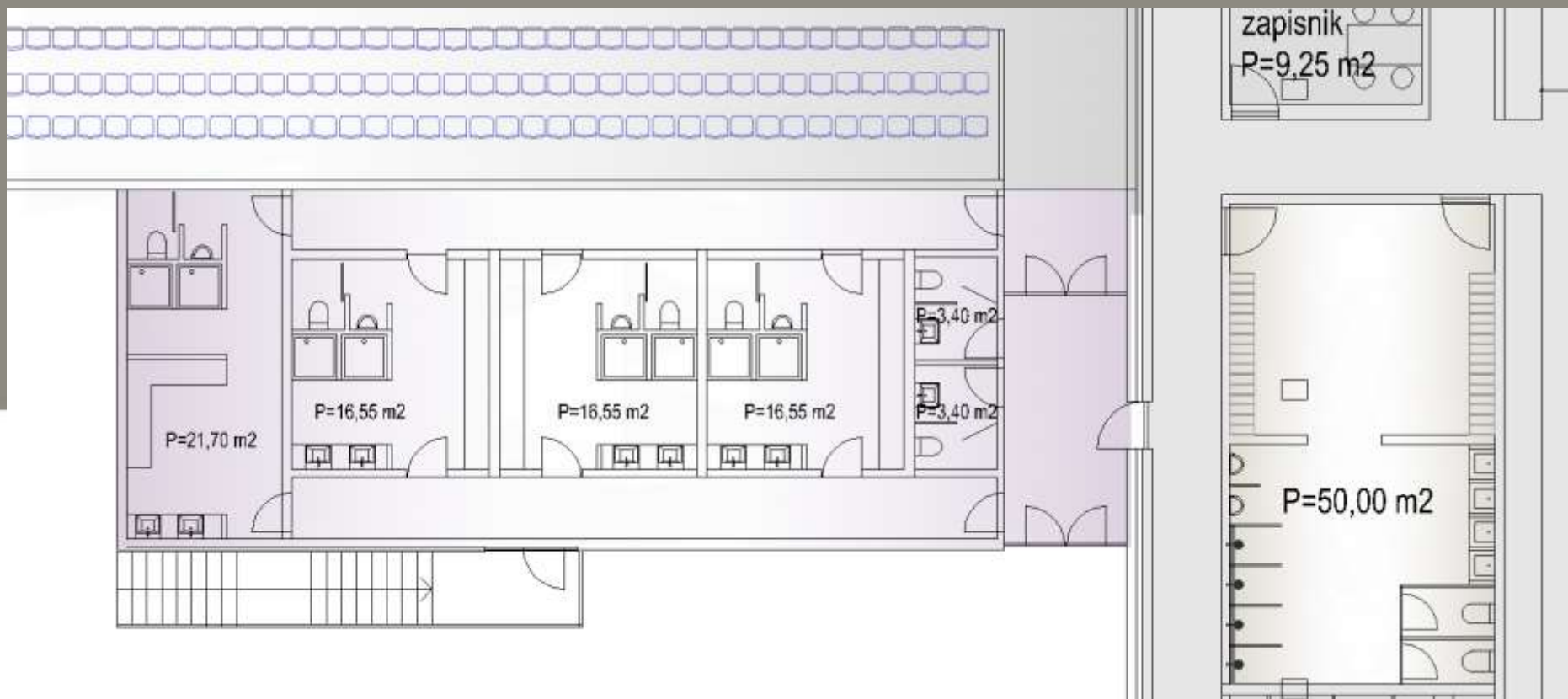
IDEJNO RJEŠENJE SPORTSKE DVORANE _ DOGRADNJA / ANEX NA JUŽNOJ STRANI



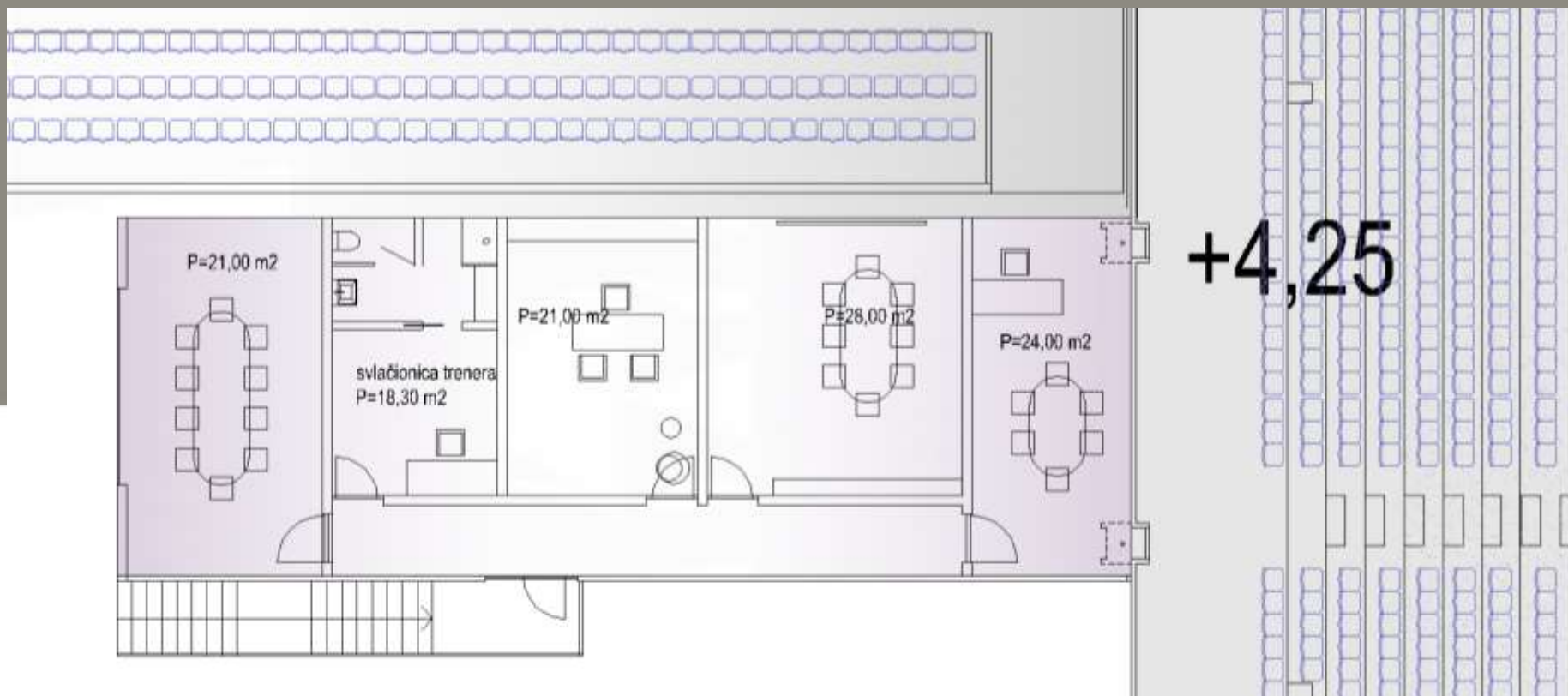
IDEJNO RJEŠENJE SPORTSKE DVORANE _ DOGRADNJA / ANEX NA JUŽNOJ STRANI / rooftop



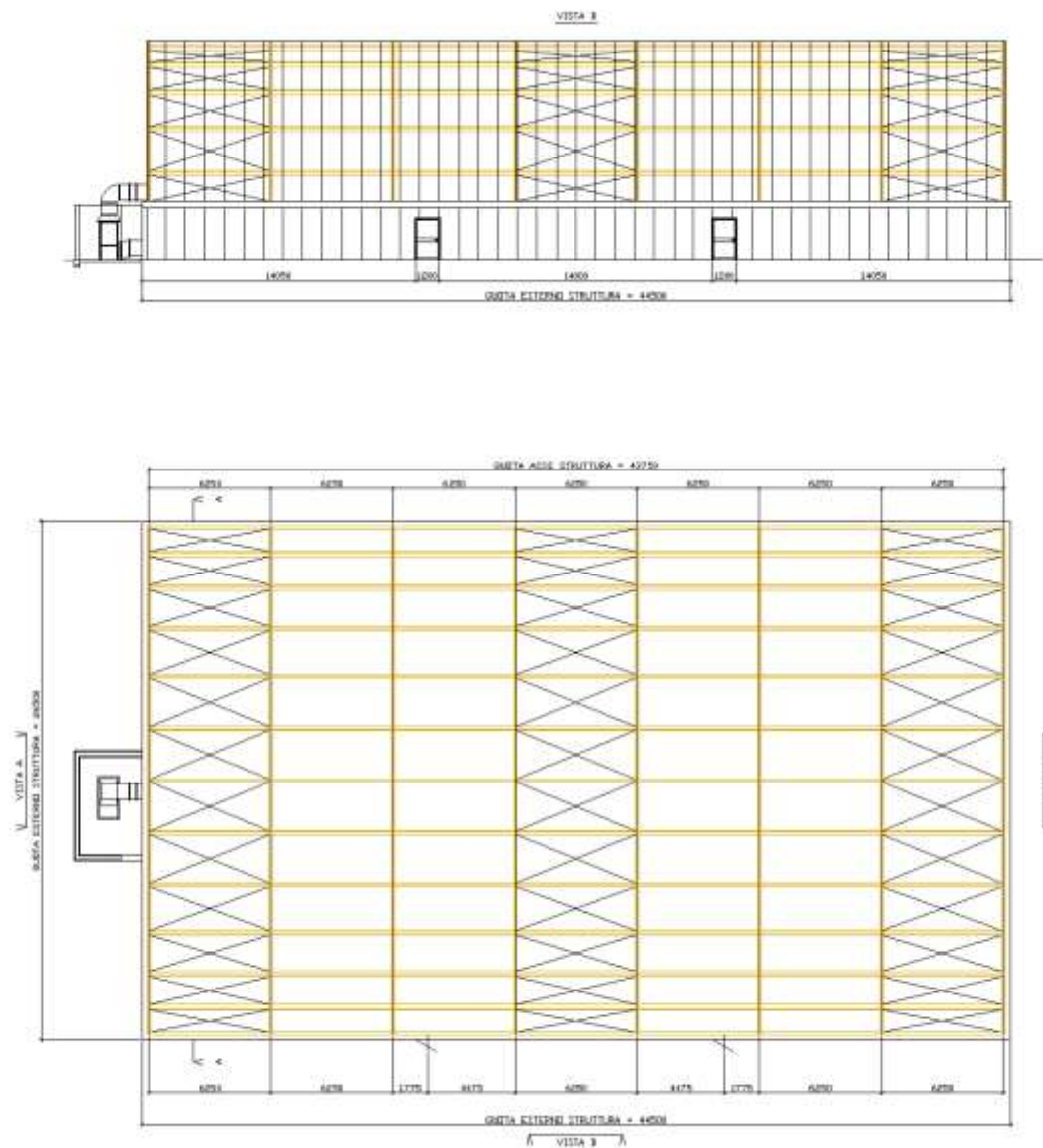
IDEJNO RJEŠENJE SPORTSKE DVORANE _ DOGRADNJA / ANEX NA ZAPADNOJ STRANI



IDEJNO RJEŠENJE SPORTSKE DVORANE _ DOGRADNJA / ANEX NA ZAPADNOJ STRANI

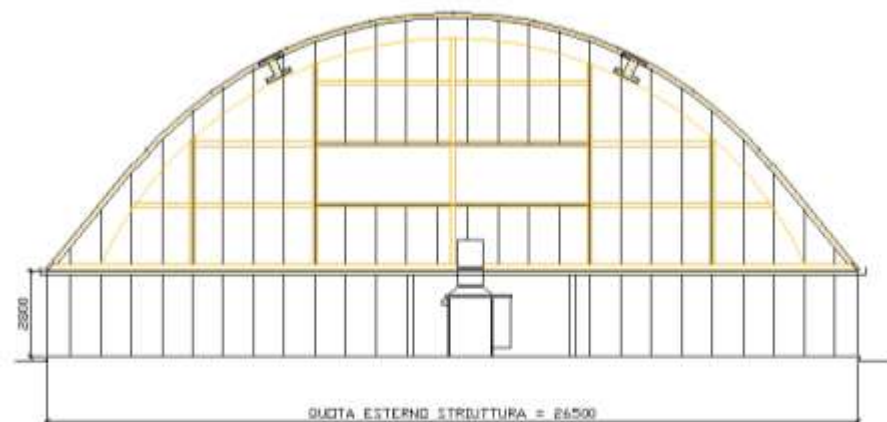


IDEJNO RJEŠENJE SPORTSKE DVORANE _ MALA DVORANA

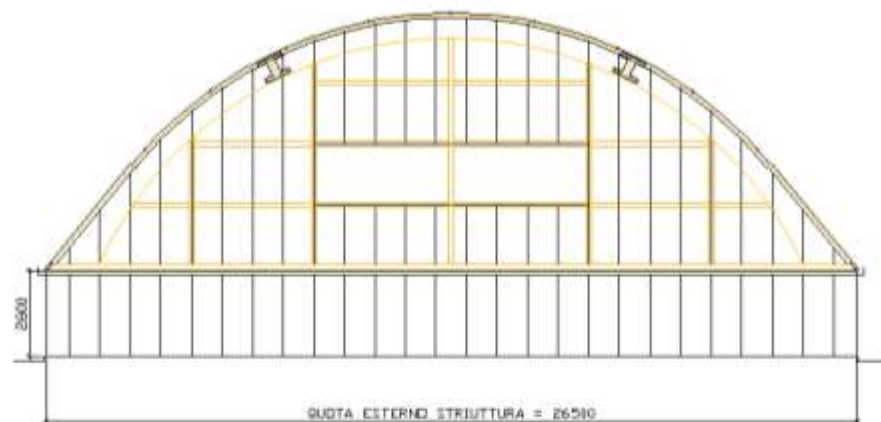


IDEJNO RJEŠENJE SPORTSKE DVORANE _ DOGRADNJA / MALA DVORANA

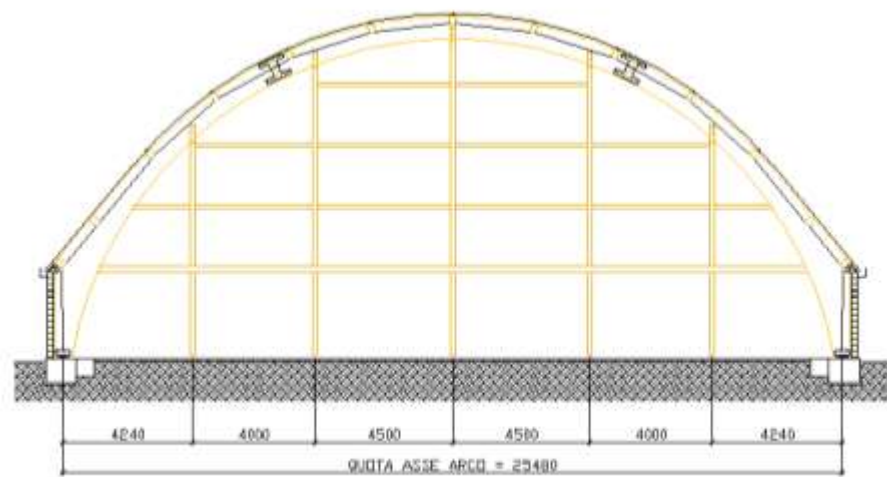
VISTA A



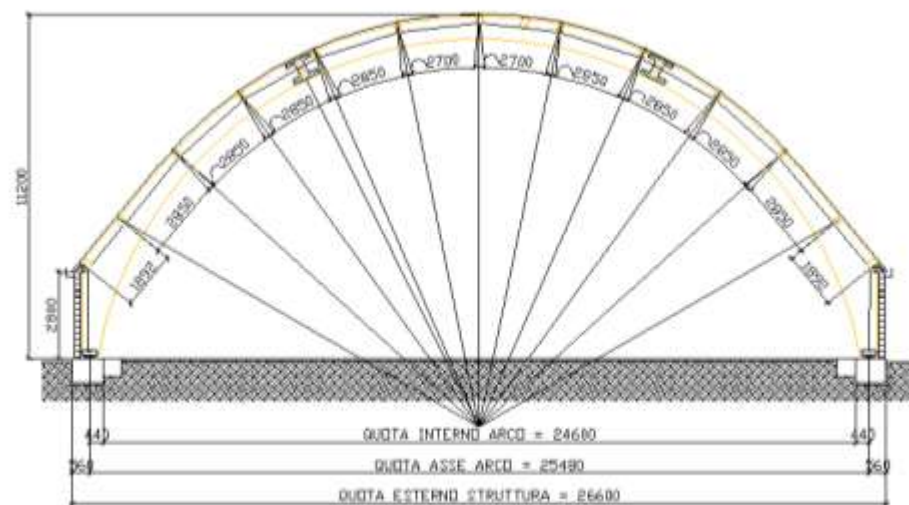
VISTA C



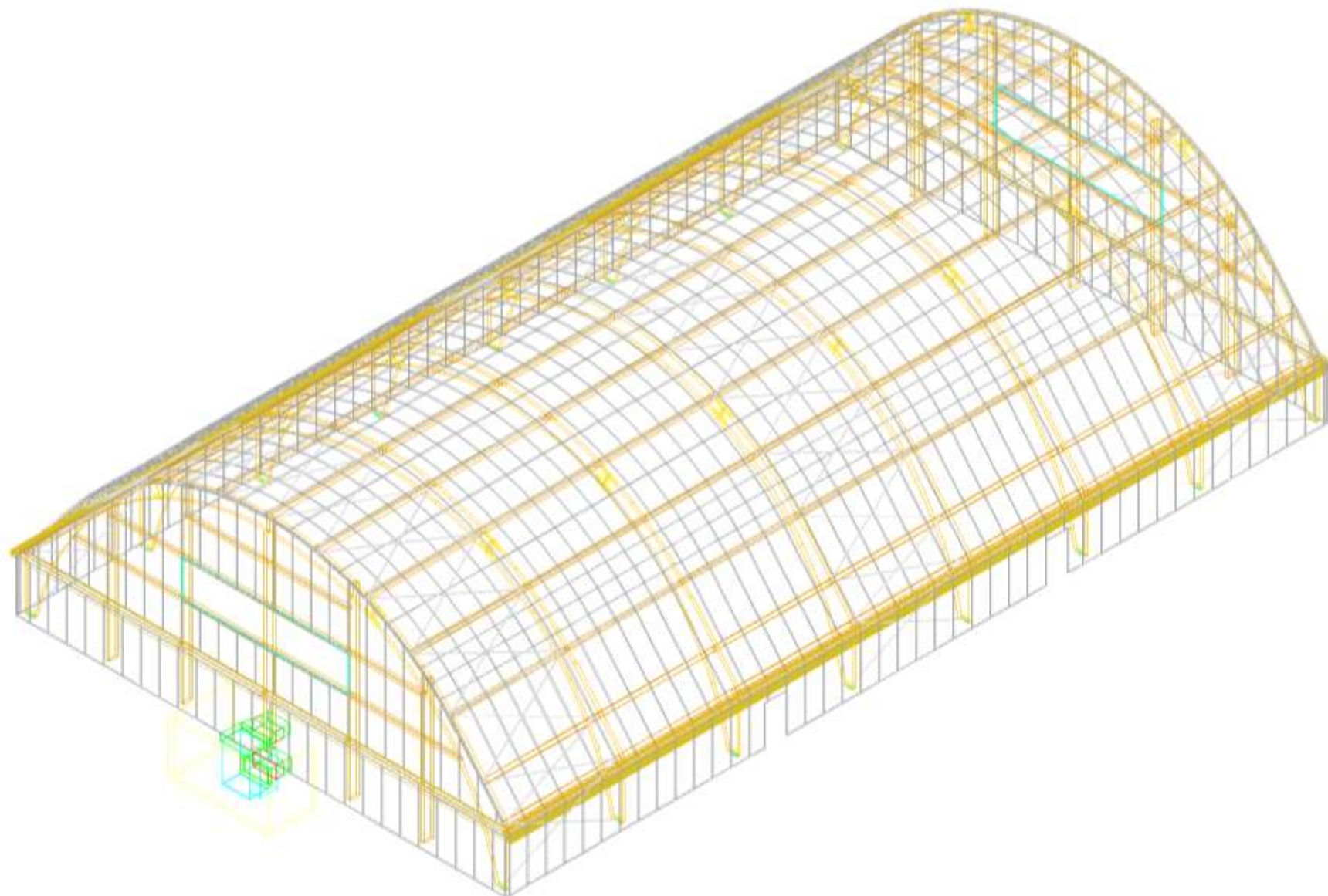
SEZIONE A-A



STUDIO ARCO E PANNELLI



IDEJNO RJEŠENJE SPORTSKE DVORANE _ DOGRADNJA / MALA DVORANA



ŠIRENJE SADRŽAJA SPORTSKE DVORANE - VIZUALIZACIJA



ŠIRENJE SADRŽAJA SPORTSKE DVORANE – PRISTUPNI TRG MALE DVORANE

